

# Our Vision

At Kuponya Innovations we believe that the best solutions come from co-creating with the community and respecting the land on which the homes are built.

We build solutions tailored to each community's unique cultural and environmental conditions keeping several key criteria in mind...

## *Affordability*

Our homes are designed to minimize both the initial price and annual operating costs, while maintaining quality and longevity.

## *Sustainability*

We use the most sustainable materials and systems to respect the land and maximize energy efficiency, with a goal of energy self-sufficiency.

## *Climate Resiliency*

Careful thought has been taken to ensure that climate impacts are minimized to increase the resiliency of our homes.

## *Capacity Building*

Our homes can be assembled with minimal training, allowing community members to develop green skills for building and maintaining the homes.



# We'd Love to Work with You

For more information, please email us:  
[info@kuponyainnovations.ca](mailto:info@kuponyainnovations.ca)

# Our Founder

Kuponya means *to heal* in Swahili.

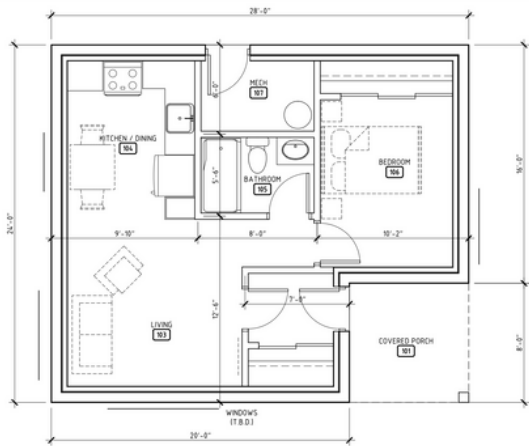
My goal, as the founder of Kuponya Innovations, is to support healing in frontline communities most impacted by climate change, by providing innovative housing solutions that are not only resilient to climate impacts, but sustainable to reduce future impacts.



Founder: Jordan Prentice



# Building Future-Proof Housing



## Designed for Living

Our single-bedroom base layout, at 672 sq.ft., can easily be expanded with a second bedroom. Homes can also be arranged together in a number of configurations to foster community.

We tailor our floorplans to suit the needs of your community. We welcome the opportunity to create a design that works with your lifestyle.

## Chosen with Care

All major components for our homes have been carefully chosen to:

- withstand harsh northern temperatures
- create a water and fire resistant building envelope
- account for melting permafrost
- resist mold and mildew
- reduce building time (days vs months)
- minimize on-site construction waste
- prevent damage to the land
- achieve maximum durability
- lower operating costs
- simplify maintenance

The price of our 'house in a box' kit includes all major components to build your home. Transportation, mechanicals, and labour are arranged separately to accommodate the needs and circumstances of each community.

Through a partnership with IKEA Canada our 'house in a box' kit also includes customized furniture, cabinetry, and finishing packages designed to suit your life at home.



## Preserving Energy

We are incorporating Passive House and NetZero principles into our designs to provide the lowest operating costs today and the most sustainable future tomorrow.

Your home will use significantly less energy due to its size and innovative airtight building envelope.

**PASSIVEHOUSE**  
**CANADA** Build better.  
Feel better.



We strongly support the movement away from diesel and other environmentally damaging fuels and toward energy self-sufficiency.

Our designs prioritize the use of renewable energy sources wherever possible.

Available rebates for using certified green products can be applied to reduce your overall costs (if available in your region).